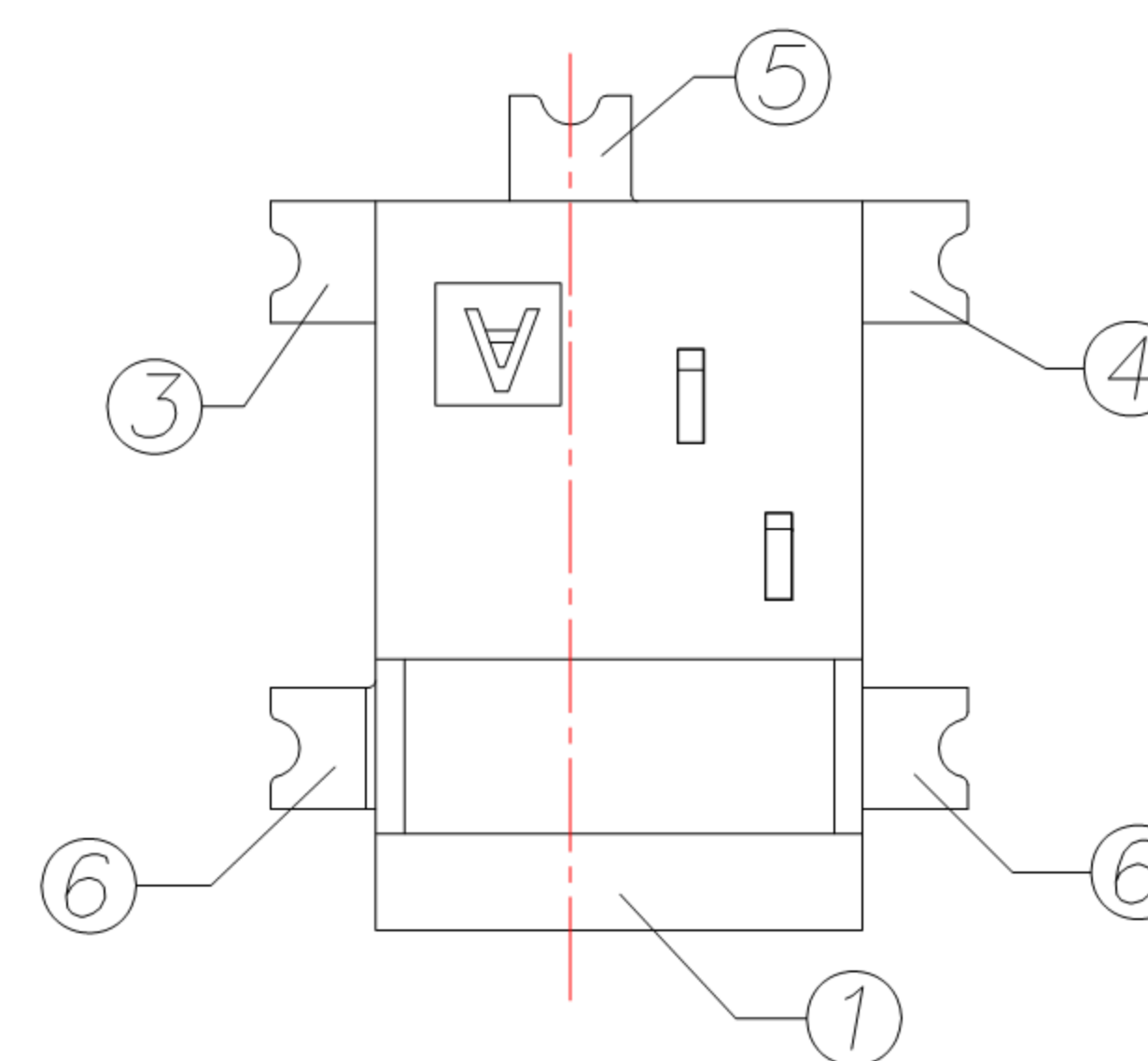
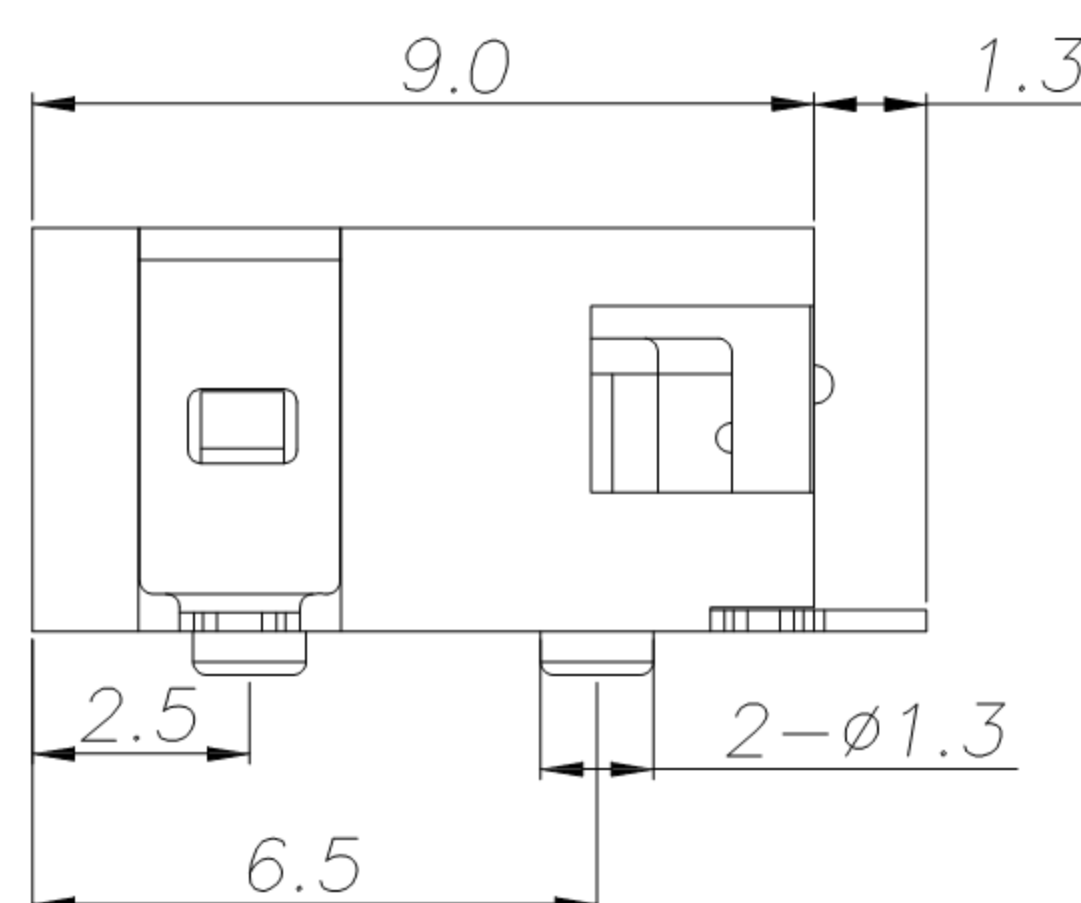
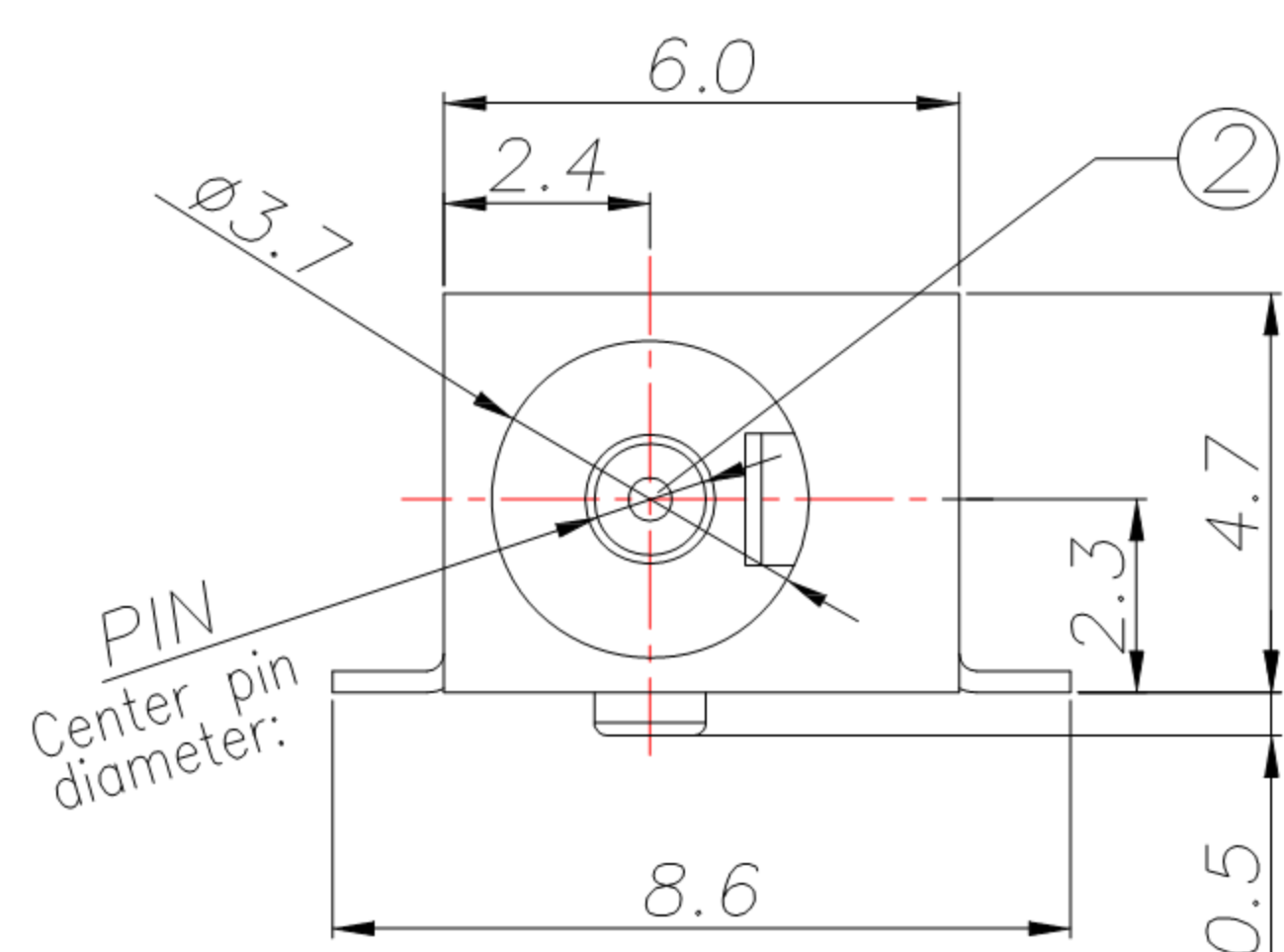


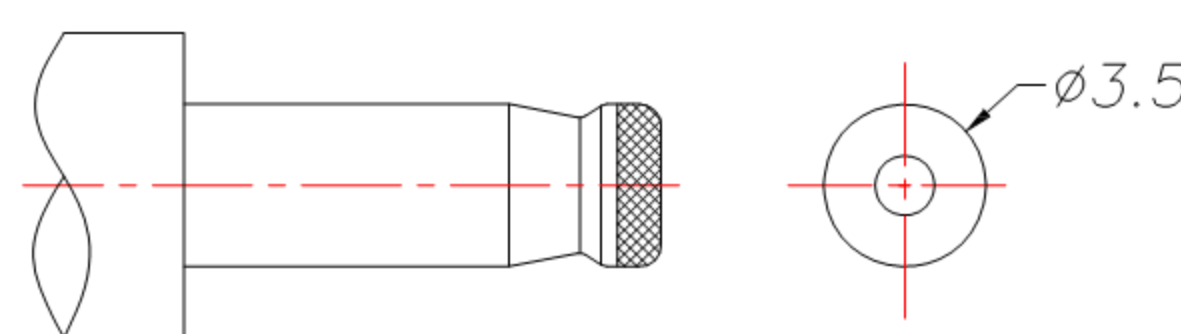
Model NO.	DC-073DS-1.0	DC-073DS-1.3
PIN(X)	φ1.0	φ1.3

RECOMENDED P.C.B LAYOUT

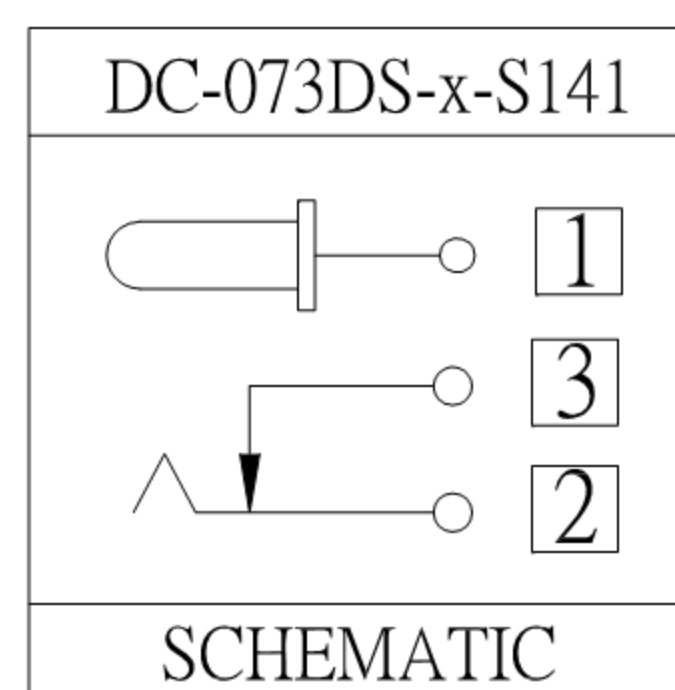


SPECIFICATION

1. Rating : DC 12V 2.0A
2. Contact resistance : $\leq 30m\Omega$
3. Insulation resistance : $\geq 100M\Omega$
4. Withstand voltage : 500VAC
5. Insertion and extraction force : 3-30N
6. life test : 5,000 cycles



DC MATE PLUG



□ : TERMINAL NO.

NO.	DESCRIPTION	QTY	MATERIAL	REMARK
⑥	Frame	4	Copper Alloy	Ag Plating
⑤	Shunt Terminal	3	Copper Alloy	Ag Plating
④	Tip Spring	2	Copper Alloy	Ag Plating
③	Center Pin Terminal	1	Copper Alloy	Ag Plating
②	Center Pin	1	Copper Alloy	CuSn Plating
①	Housing	1	PA9T	Black

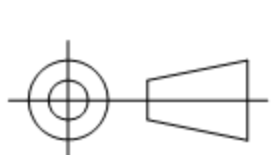


东莞市高迪电子有限公司
Dong Guan KDRR Electronic Switch Jack Co., Ltd.

TOLERANCE UNLESS OTHERWISE STATED :

Up to 5 ±0.2
Above 5 ~ 15 ±0.3
Above 15 ~ 30 ±0.4
Above 30 ~ 50 ±0.5
Angle ±0.3°

3RD. ANGEL'S



UNITS

MM

DRAWN BY:	DATE	MAT'L	TITLE	JACK
Jack Lu	04/20/15		MODLE	DC JACK
CHECKED BY:	DATE	FINISH	DWG NO.	DC-073DS-x-S141
Jacky Chen	04/20/15		PART NO.	DC-073DS-x-S141
APPROVED BY:	DATE	SCALE	SHEET NO.	1 of 1
Tony Kao	04/20/15	1 : 1		

ITEM NO.	DESCRIPTION	DRAWN	DATE